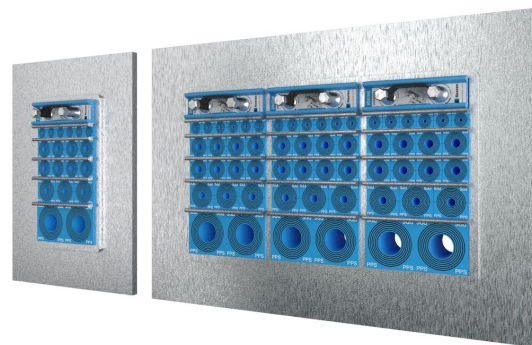




Passaggio Roxtec SF per condotti in plastica

Passaggio resistente al fuoco per condotti in plastica.

Roxtec SF per condotti in plastica è un passaggio per il fissaggio a strutture che necessitano di una saldatura semplice e della resistenza al fuoco. Ha una flangia che impedisce al telaio di cadere attraverso l'apertura del pavimento durante la saldatura e fornisce uno spazio chiuso e sicuro nelle applicazioni a pavimento. Il telaio rettangolare in acciaio consente l'instradamento di condotti ad alta densità di cavi. I moduli di sigillatura Roxtec RM PPS per condotti in plastica sono contrassegnati con la NW corrispondente per semplificare l'installazione e possono essere combinati con i normali moduli RM per un mix di condotti e cavi nello stesso telaio.



- Facilità di manutenzione e controllo
- Consente capacità di riserva integrata

Caratteristiche



Resistenza al fuoco



IP/UL NEMA

Struttura dell'installazione



Metallo

Tipo di montaggio



Saldatura

Ratings e certificati

Fuoco

- Classificazione E/EI secondo EN 45545 E60

Tenuta

- IP 66/67

Dimensioni telaio

mm/kg

Le varianti di telaio seguenti rappresentano una selezione limitata. Per la gamma completa di telai e configurazioni, visita [roxtec.com](https://www.roxtec.com).

	Titolo	Aperture del telaio	Spazio di riempimento	Dimensioni esterne WxHxD	Dimensioni apertura w x h	Peso	Art. Nr.
	SF 6x1 ALU	1	120 x 180	260.5 x 358 x 60	201(+15/-15) x 298(+15/-15)	2.9	SFF6000000131
	SF 6x2 ALU	2	120 x 180	391 x 358 x 60	332(+15/-15) x 298(+15/-15)	4.2	SFF6000000231
	SF 6x3 ALU	3	120 x 180	521.5 x 358 x 60	462(+15/-15) x 298(+15/-15)	6	SFF6000000331
	SF 6x1 PRIMED	1	120 x 180	260.5 x 358 x 60	201(+15/-15) x 298(+15/-15)	7.6	SFF6000000112
	SF 6x2 PRIMED	2	120 x 180	391 x 358 x 60	332(+15/-15) x 298(+15/-15)	12	SFF6000000212
	SF 6x3 PRIMED	3	120 x 180	521.5 x 358 x 60	462(+15/-15) x 298(+15/-15)	16.4	SFF6000000312
	SF 6x1 AISI316	1	120 x 180	260.5 x 358 x 60	201(+15/-15) x 298(+15/-15)	8.2	SFF6000000121
	SF 6x2 AISI316	2	120 x 180	391 x 358 x 60	332(+15/-15) x 298(+15/-15)	12.2	SFF6000000221
	SF 6x3 AISI316	3	120 x 180	521.5 x 358 x 60	462(+15/-15) x 298(+15/-15)	16.6	SFF6000000321

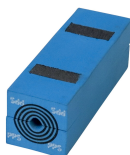


Dati relativi ai componenti

Componenti per la sigillatura



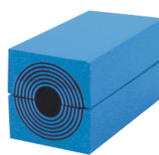
Lubrificante



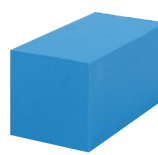
Modulo RM PPS con
Multidiameter™



Wedge kit e Wedge Roxtec



Modulo RM con
Multidiameter™



Blocco di riempimento RM



Strumenti Welding



Piastra di ancoraggio
Roxtec

Per informazioni dettagliate, visita la pagina [roxtec.com](https://www.roxtec.com).

The product information provided by Roxtec does not release the purchaser of the Roxtec system, or part thereof, from the obligation to independently determine the suitability of the products for the intended process, installation and/or use.

Roxtec gives no guarantee for the Roxtec system or any part thereof and assumes no liability for any loss or damage whatsoever, whether direct, indirect, consequential, loss of profit or otherwise, occurred or caused by the Roxtec systems or installations containing components not manufactured by an authorized manufacturer and/or occurred or caused by the use of the Roxtec system in a manner or for an application other than for which the Roxtec system was designed or intended.

Roxtec expressly excludes any implied warranties of merchantability and fitness for a particular purpose and all other express or implied representations and warranties provided by statute or common law. User determines suitability of the Roxtec system for intended use and assumes all risk and liability in connection therewith. In no event shall Roxtec be liable for indirect, consequential, punitive, special, exemplary or incidental damages or losses.

The Roxtec products are offered and sold in accordance with the conditions of the Roxtec General Terms of Sales. The latest version of the Roxtec General Terms of Sales can be downloaded from <https://www.roxtec.com/en/about-us/about-roxtec/general-terms-of-sales/>

We reserve the right to make changes to the product and technical information without further notice. Any errors in print or entry are no claims for indemnity. The content of this publication is the property of Roxtec International AB and is protected by copyright.

This document was generated on: 2024-04-12